

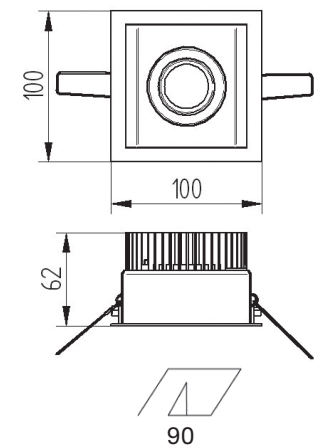
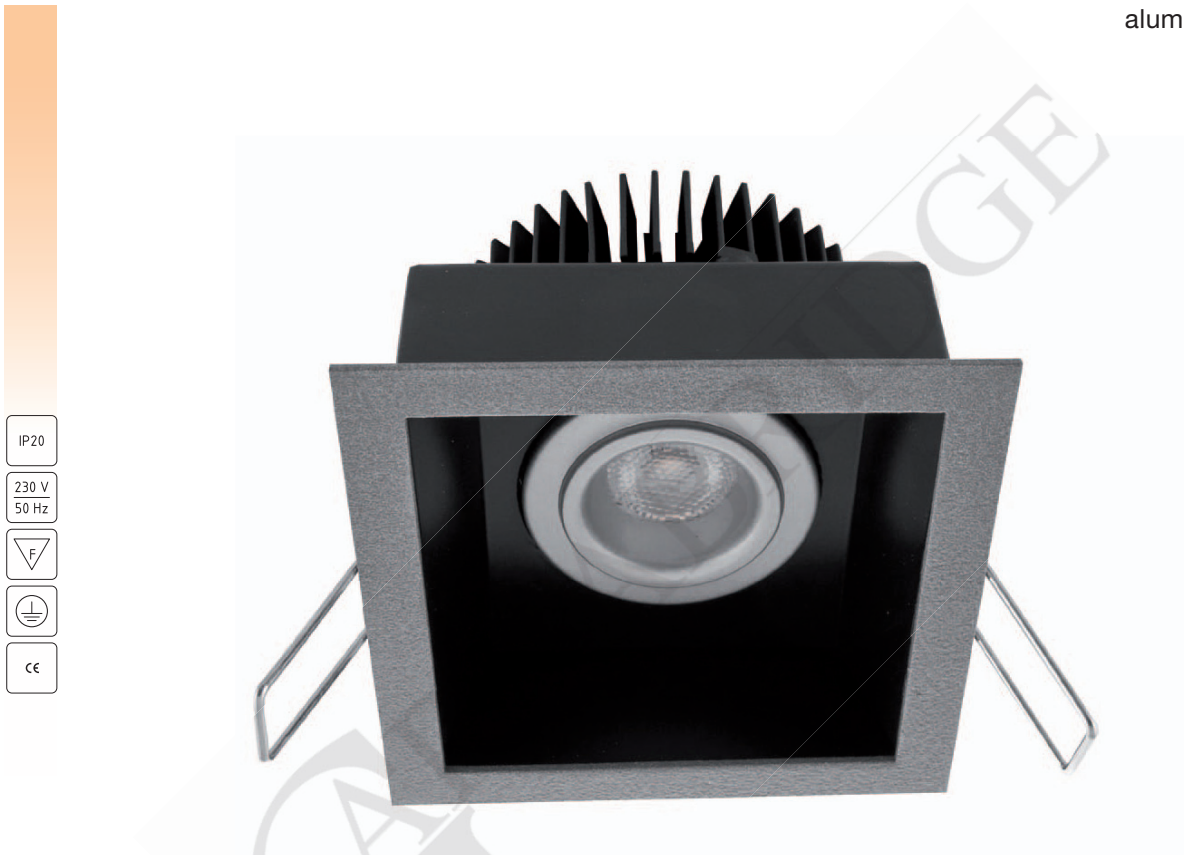
Recessed Fortimo LED Disc luminaire. Body is made of steel and aluminium. All RAL colours are available.

Product features:

- Superior light quality and performance
- Innovative and reliable LED solution
- Integrated driver

Ideal for replacing halogen 50 W in various applications:

- Hospitality, healthcare and cruise ship applications: corridors, service areas, lobbies, lounges, restaurants, reception areas, waiting rooms
- Home applications: ceiling luminaires, shelf lighting, under-cabinet lighting
- Retail applications: corridors, changing rooms
- Office applications: corridors, meeting rooms



Index no.	Lumen output	Wattage	System efficacy	Colour temp.	Colour rendering index	Lifetime	Weight
0000-003407.300/827	300 lm	7,7W	38 lm/W	2700K	80 Ra	20,000 h	0,33 kg