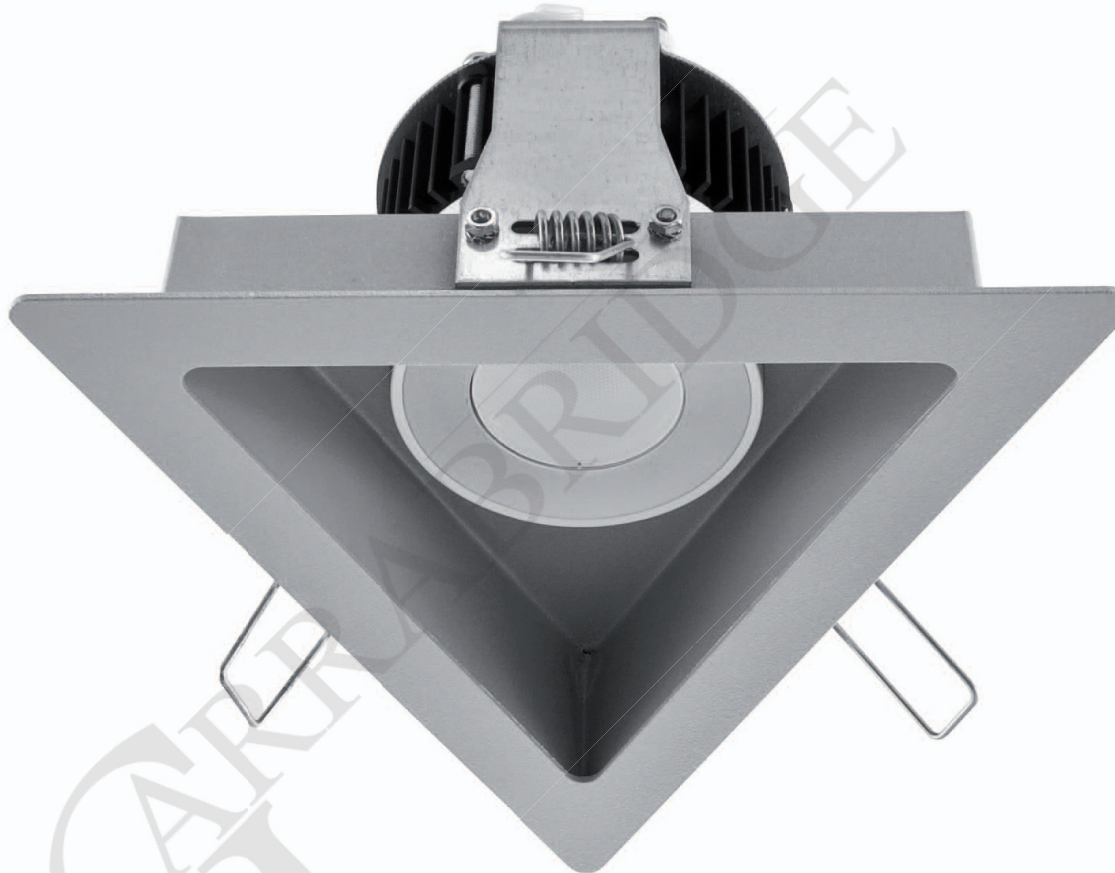


Recessed Fortimo LED Disc luminaire. Body is made of aluminium.  
All RAL colours are available.



**Product features:**

- Superior light quality and performance
- Innovative and reliable LED solution
- Integrated driver
- Built-in beam angle (80°)

Ideal for replacing halogen 50 W, CFL 2x13W or incandescent 60W solutions in various applications:

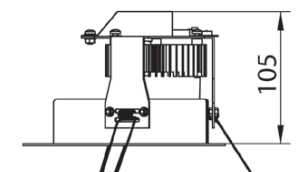
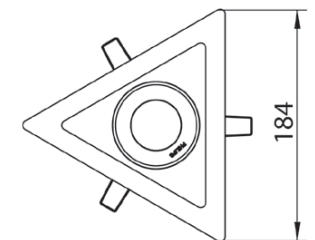
- Hospitality, healthcare and cruise ship applications: corridors, service areas, lobbies, lounges, restaurants, reception areas, waiting rooms
- Home applications: ceiling luminaires, shelf lighting, under-cabinet lighting
- Retail applications: corridors, changing rooms
- Office applications: corridors, meeting rooms

IP20

230 V  
50 Hz



CE



Index no.	Lumen output	Wattage	System efficacy	Colour temp.	Colour rendering index	Lifetime	Weight
0000-003734.820/827	820 lm	14,5W	56 lm/W	2700K	80 Ra	25,000 h	0,64 kg
0000-003734.850/840	850 lm	15,2W	56 lm/W	4000K	80 Ra	25,000 h	0,64 kg