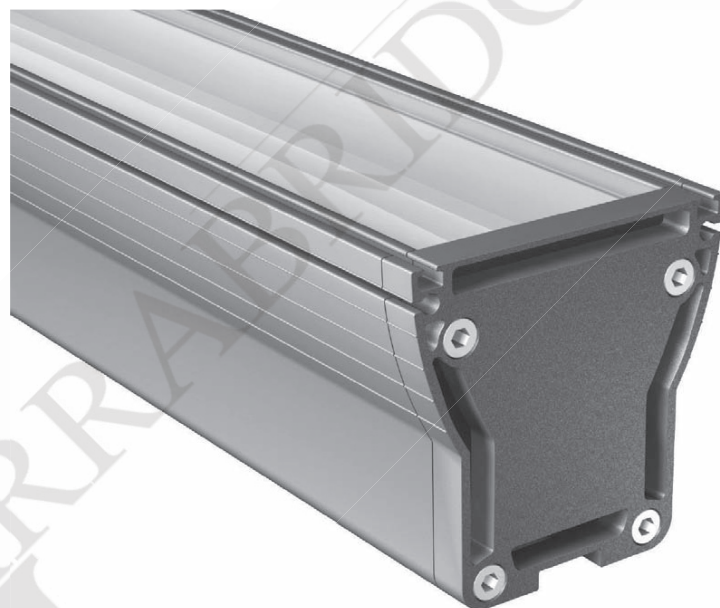


Surface mounted IP67 LED luminaire. Light source - PowerLED diods. Body is made of aluminium profile - standard gray, other colours on request. Diffuser - clear or mat tempered glass.

This luminaire is available with different colour temperatures of LED diodes listed below. Wattage and lumen output depends on the length and number of LED diodes in the luminaire. Single LED diode has 1,12W and lumen output of each diode depends on the colour temperature. For example, SLIM - LED 1 with 9 LED diodes and colour temperature of 4000K has 10,08W and 810 lm.



Colour temp.	Lumen output	Wattage / one diode
2700K	70 lm/diode	1,12W
3000K	80 lm/diode	1,12W
4000K	90 lm/diode	1,12W
5000K	100 lm/diode	1,12W
6000K	110 lm/diode	1,12W

IP67

230 V
50 Hz



CE



Index no.	Number of diods	Length	Weight
0000-003487.9	9	341 mm	1,20 kg
0000-003487.18	18	602 mm	1,80 kg
0000-003487.28	28	902 mm	2,40 kg
0000-003487.31	31	1000 mm	2,50 kg
0000-003487.38	38	1202 mm	3,20 kg
0000-003487.48	48	1502 mm	3,80 kg

