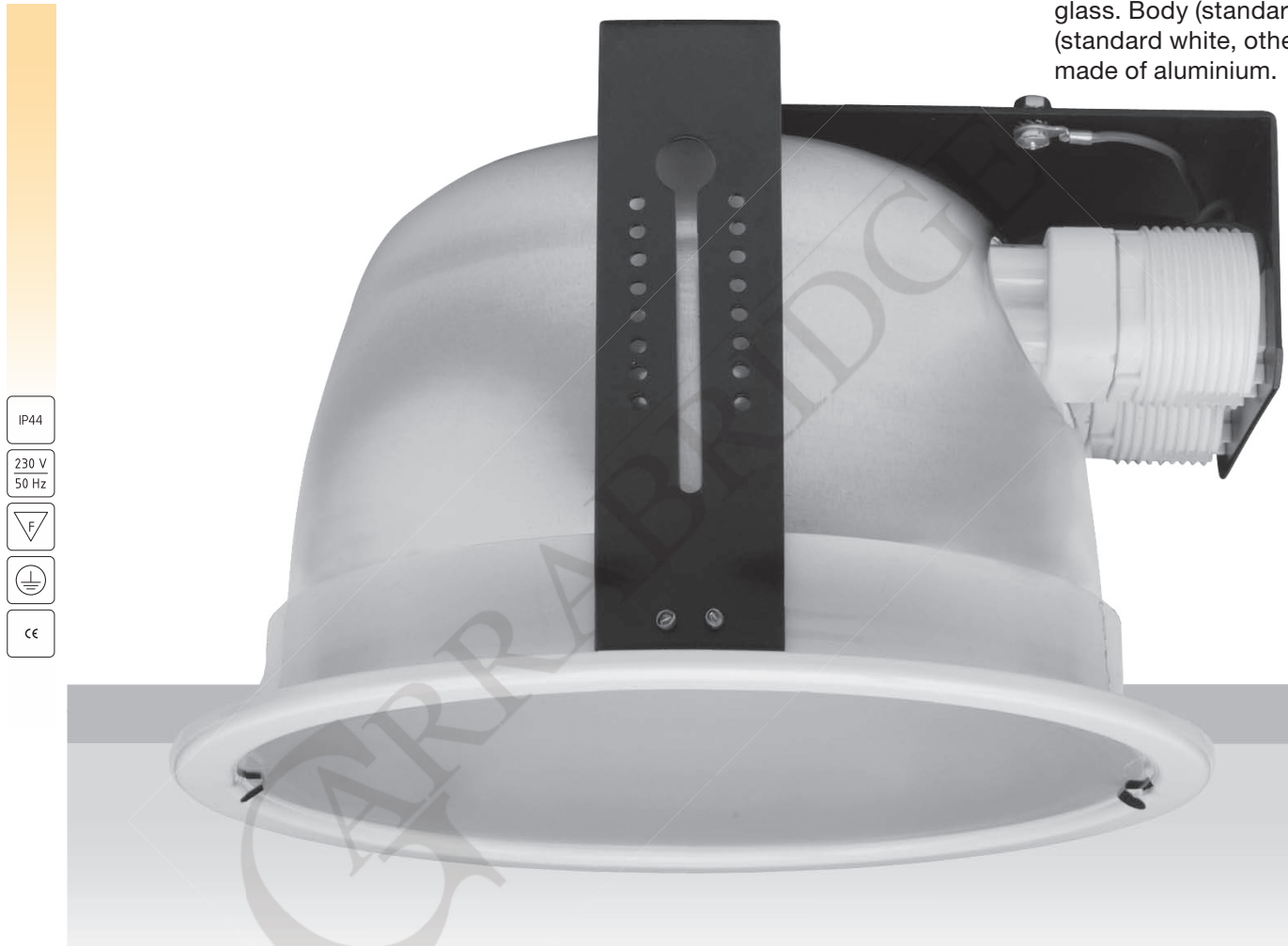


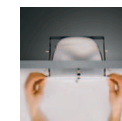
Recessed downlight for compact fluorescent lamps with flat IP44 glass. Body (standard zinc, painted black on request) and ring (standard white, other colours on request) are made of steel. Reflector made of aluminium.



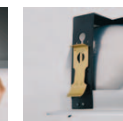
- IP44
- 230 V
50 Hz
- F
- ⊥
- CE

Technical extras upon request:

1. Emergency supply
- battery pack 1/2/3h (please add EM1, EM2 or EM3 after index number)
2. Compensation or passive power (capacitor).
Please add COMPENSATION after index number.
3. Dimmable ballast EVG DIM (1-10 V).
Please add EVG DIM after index number.
4. Digital dimmable ballast (DALI).
Please add DALI after index number.



Easy installation – without tools.



Mounting brackets.



IP44 glass can be clear or matt.

Index no.	Lamp	Weight	Socket
273.220.6482V	VVG, 1x13W TC-D	1,80 kg	G24d - 1
273.220.6482E	EVG, 1x13W TC-DEL	1,65 kg	G24q - 1
273.220.6480V	VVG, 1x18W TC-D	1,80 kg	G24d - 2
273.220.6480E	EVG, 1x18W TC-DEL	1,65 kg	G24q - 2
273.220.6580V	VVG, 1x26W TC-D	2,00 kg	G24d - 3
273.220.6580E	EVG, 1x26W TC-DEL	1,70 kg	G24q - 3
273.220.6492V	VVG, 2x13W TC-D	2,10 kg	G24d - 1
273.220.6492E	EVG, 2x13W TC-DEL	1,80 kg	G24q - 1
273.220.6490V	VVG, 2x18W TC-D	2,10 kg	G24d - 2
273.220.6490E	EVG, 2x18W TC-DEL	1,80 kg	G24q - 2
273.220.6590V	VVG, 2x26W TC-D	2,30 kg	G24d - 3
273.220.6590E	EVG, 2x26W TC-DEL	1,80 kg	G24q - 3

