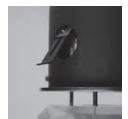
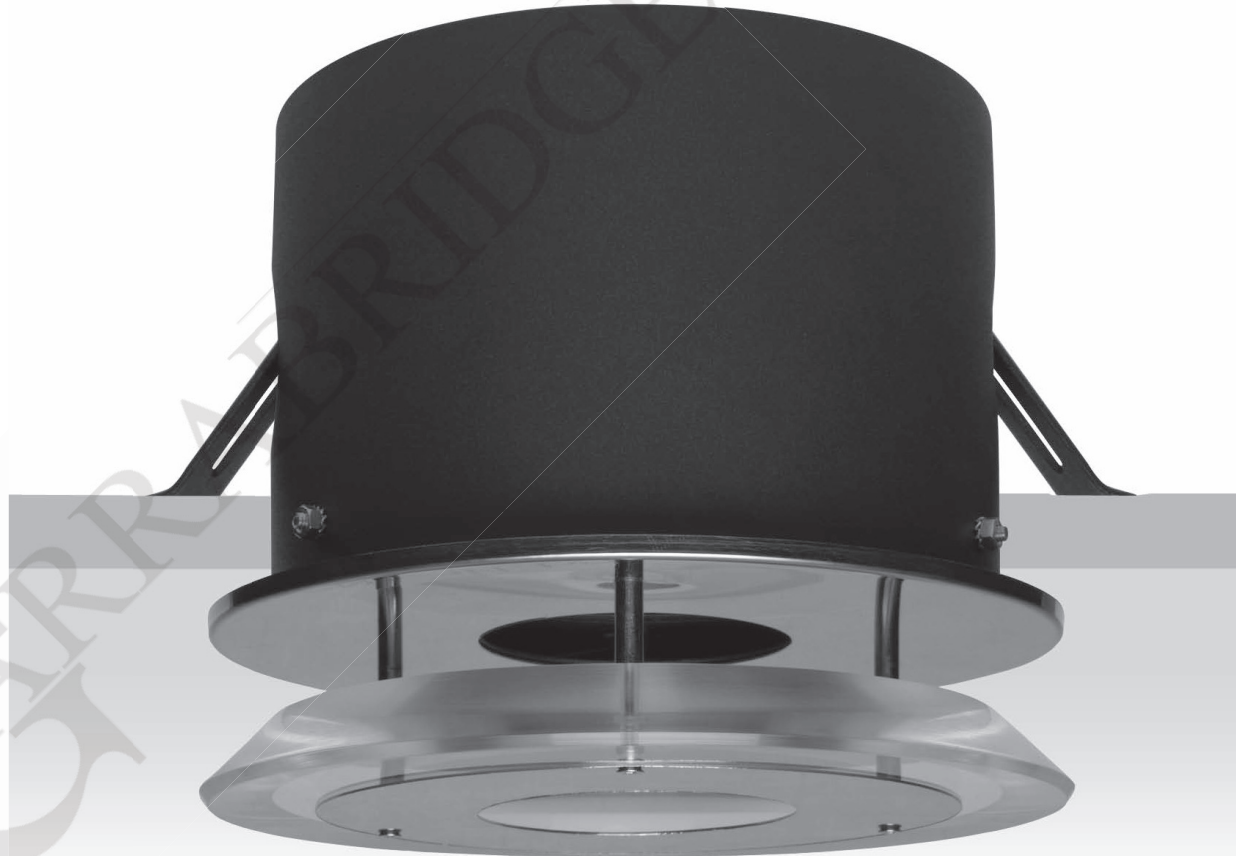


Recessed downlight for CDM-TD lamp. Body is made of aluminium, outside ring is made of stainless steel. Reflector made of aluminium sandblasted. Decorative ring made of plexiglass.



Mounting brackets.

Index no.	Lamp	Weight	Socket
106.140.70V	VVG, 1x70W CDM-TD	3,50 kg	Rx7S
106.140.70E	EVG, 1x70W CDM-TD	2,65 kg	Rx7S

