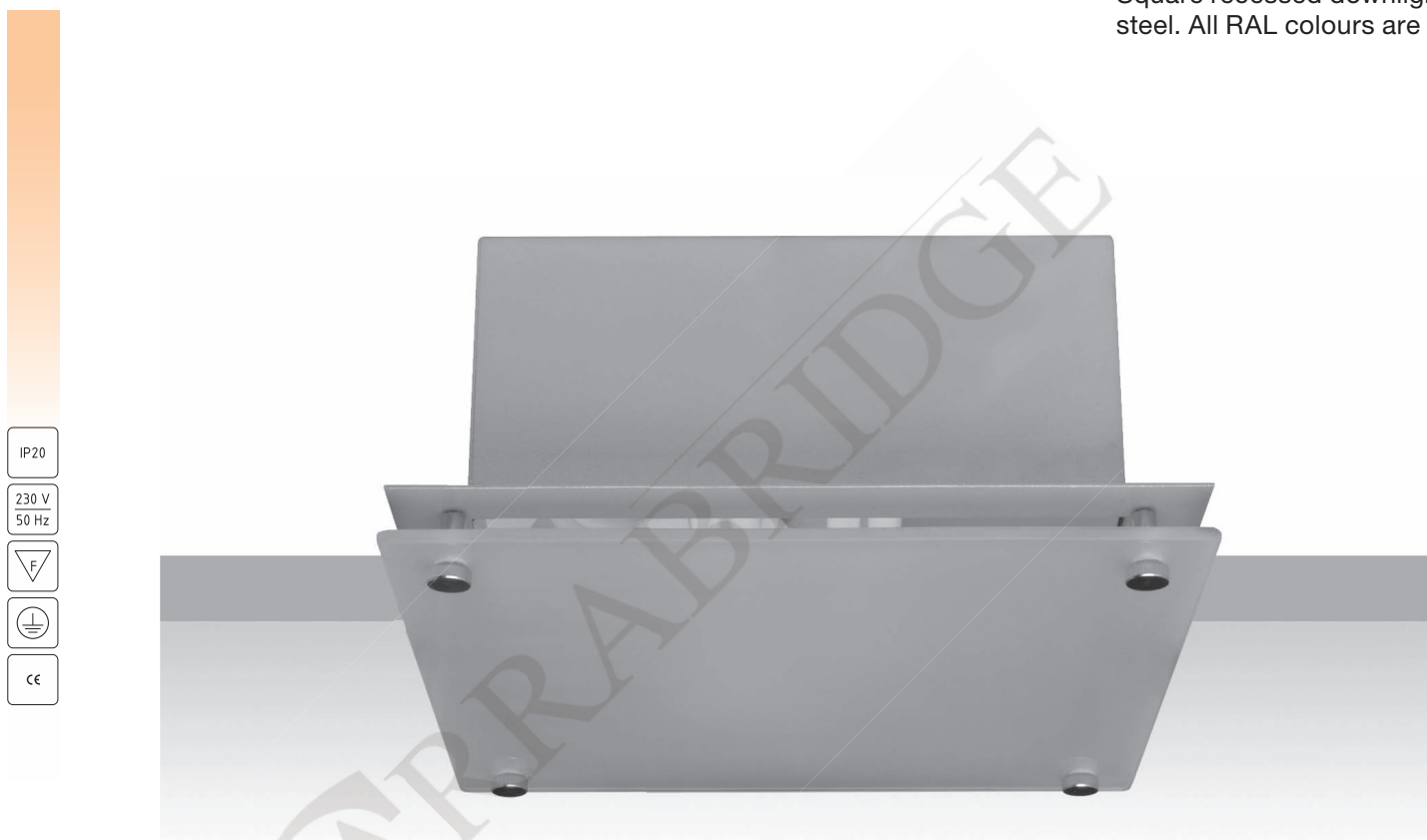


Square recessed downlight with matt glass diffuser. Body is made of steel. All RAL colours are available on request.




Technical extras upon request:

1. Emergency supply
- battery pack 1/2/3h (please add EM1, EM2 or EM3 after index number)
2. Compensation or passive power (capacitor).
Please add COMPENSATION after index number.
3. Dimmable ballast EVG DIM (1-10 V).
Please add EVG DIM after index number.
4. Digital dimmable ballast (DALI).
Please add DALI after index number.



Index no.	Lamp	Weight	Socket
250.210.118V	VVG, 1x18W TC-D	1,85 kg	G24d - 2
250.210.118E	EVG, 1x18W TC-DEL	1,55 kg	G24q - 2
250.210.126V	VVG, 1x26W TC-D	1,85 kg	G24d - 3
250.210.126E	EVG, 1x26W TC-DEL	1,60 kg	G24q - 3
250.210.218V	VVG, 2x18W TC-D	1,85 kg	G24d - 2
250.210.218E	EVG, 2x18W TC-DEL	1,55 kg	G24q - 2
250.210.226V	VVG, 2x26W TC-D	1,90 kg	G24d - 3
250.210.226E	EVG, 2x26W TC-DEL	1,60 kg	G24q - 3


185 x 192

