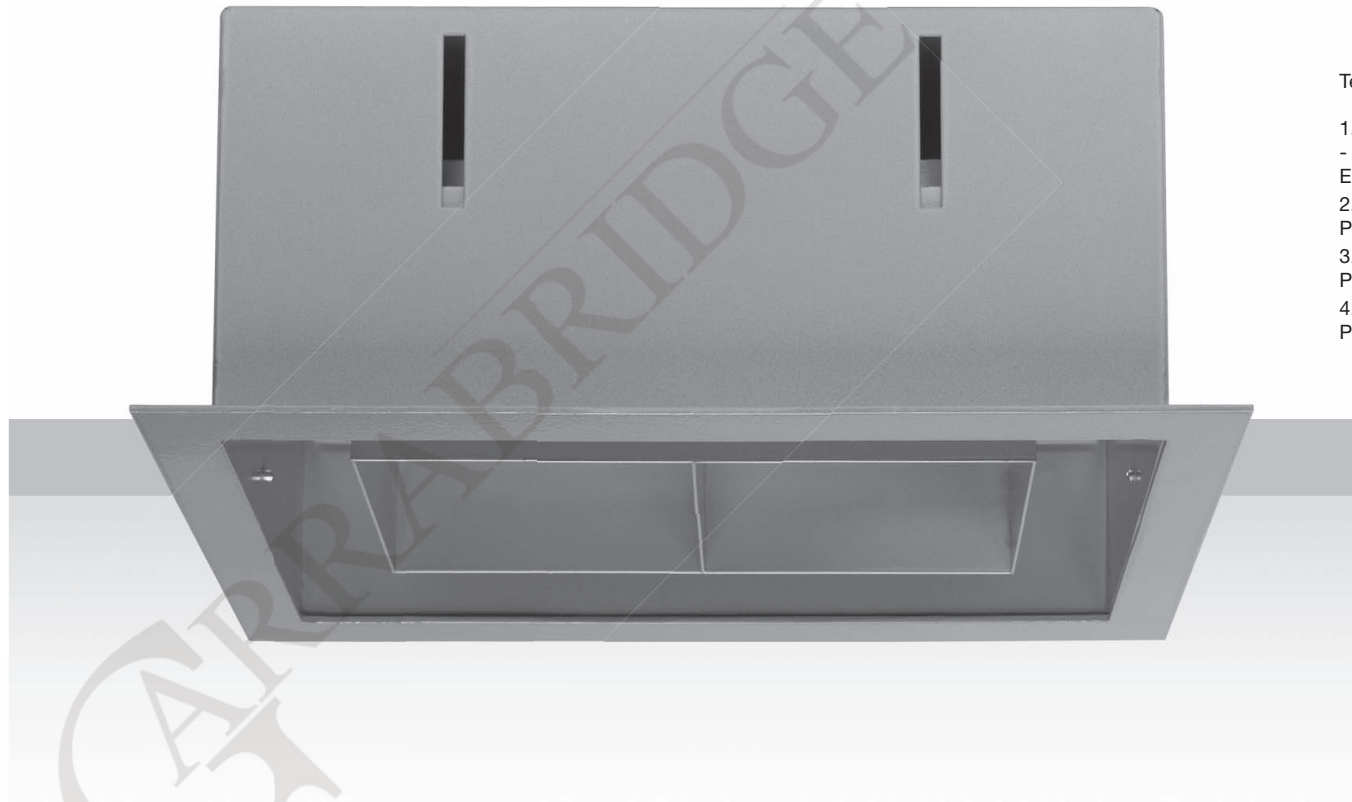


Recessed luminaire for compact fluorescent lamp. Body is made of steel. All RAL colours are available.



Technical extras upon request:

1. Emergency supply  
- battery pack 1/2/3h (please add EM1, EM2 or EM3 after index number)
2. Compensation or passive power (capacitor).  
Please add COMPENSATION after index number.
3. Dimmable ballast EVG DIM (1-10 V).  
Please add EVG DIM after index number.
4. Digital dimmable ballast (DALI).  
Please add DALI after index number.



Index no.	Lamp	Weight	Socket
144.113V	VVG, 1x13W TC-D	2,20 kg	G24d - 1
144.113E	EVG, 1x13W TC-DEL	2,05 kg	G24q - 1
144.118V	VVG, 1x18W TC-D	2,20 kg	G24d - 2
144.118E	EVG, 1x18W TC-DEL	2,05 kg	G24q - 2
144.118ED	EVG DIM, 1x18W TC-DEL	2,05 kg	G24q - 2
144.126V	VVG, 1x26W TC-D	2,30 kg	G24d - 3
144.126E	EVG, 1x26W TC-DEL	2,20 kg	G24q - 3
144.126ED	EVG DIM, 1x26W TC-DEL	2,20 kg	G24q - 3
144.132E	EVG, 1x32W TC-TEL	2,20 kg	GX24q - 3
144.132ED	EVG DIM, 1x32W TC-TEL	2,20 kg	GX24q - 3
144.142E	EVG, 1x42W TC-TEL	2,20 kg	GX24q - 4
144.142ED	EVG DIM, 1x42W TC-TEL	2,20 kg	GX24q - 4

230 x 150

