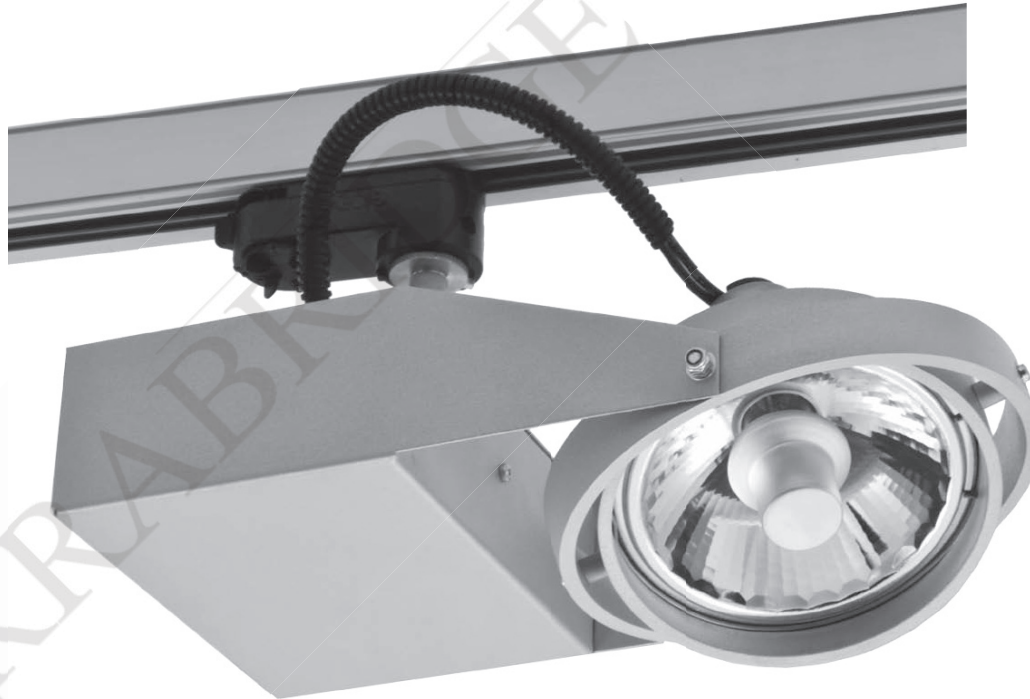


Track mounted spot for CDM-R111 lamp. Body is made of steel and aluminium. All RAL colours are available.



IP20

230 V
50 Hz



CE

Index no.	Lamp	Weight	Socket
0000-002357.135E	EVG, 1x35W CDM-R 111	1,40 kg	GX8,5
0000-002357.170E	EVG, 1x70W CDM-R 111	1,40 kg	GX8,5

