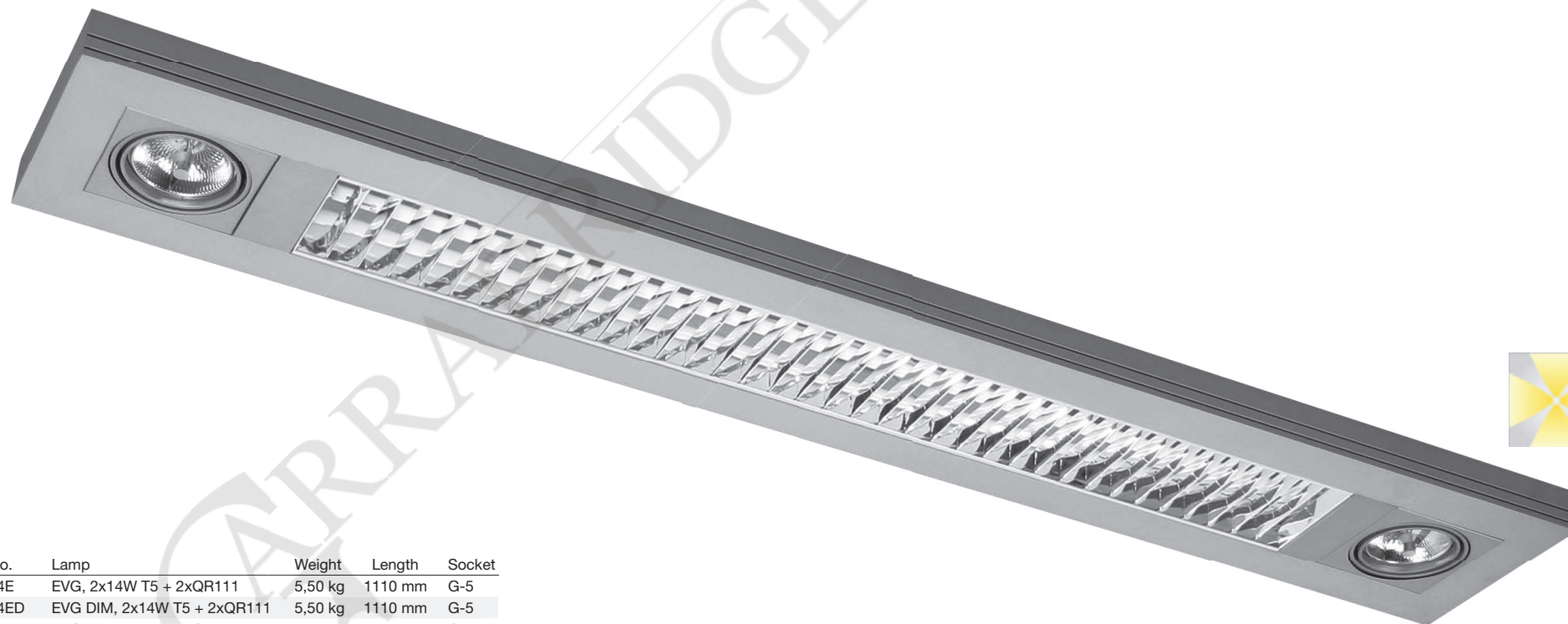


Pendent direct/indirect luminaire for T5 lamp with parabolic louver and two QR 111 lamps. Body is made of aluminium profile PROFI 58. Standard colours: structure grey, white or anodized aluminium - all other colours on request. Standard length of suspension set - 1 meter.



IP20

230 V  
50 Hz

F

CE



Index no.	Lamp	Weight	Length	Socket
426.214E	EVG, 2x14W T5 + 2xQR111	5,50 kg	1110 mm	G-5
426.214ED	EVG DIM, 2x14W T5 + 2xQR111	5,50 kg	1110 mm	G-5
426.224E	EVG, 2x24W T5 + 2xQR111	5,50 kg	1110 mm	G-5
426.224ED	EVG DIM, 2x24W T5 + 2xQR111	5,50 kg	1110 mm	G-5
426.221E	EVG, 2x21W T5 + 2xQR111	6,30 kg	1410 mm	G-5
426.221ED	EVG DIM, 2x21W T5 + 2xQR111	6,30 kg	1410 mm	G-5
426.239E	EVG, 2x39W T5 + 2xQR111	6,30 kg	1410 mm	G-5
426.239ED	EVG DIM, 2x39W T5 + 2xQR111	6,30 kg	1410 mm	G-5
426.228E	EVG, 2x28W T5 + 2xQR111	7,10 kg	1710 mm	G-5
426.228ED	EVG DIM, 2x28W T5 + 2xQR111	7,10 kg	1710 mm	G-5
426.254E	EVG, 2x54W T5 + 2xQR111	7,10 kg	1710 mm	G-5
426.254ED	EVG DIM, 2x54W T5 + 2xQR111	7,10 kg	1710 mm	G-5
426.235E	EVG, 2x35W T5 + 2xQR111	7,90 kg	2010 mm	G-5
426.235ED	EVG DIM, 2x35W T5 + 2xQR111	7,90 kg	2010 mm	G-5
426.249E	EVG, 2x49W T5 + 2xQR111	7,90 kg	2010 mm	G-5
426.249ED	EVG DIM, 2x49W T5 + 2xQR111	7,90 kg	2010 mm	G-5
426.280E	EVG, 2x80W T5 + 2xQR111	7,90 kg	2010 mm	G-5
426.280ED	EVG DIM, 2x80W T5 + 2xQR111	7,90 kg	2010 mm	G-5

