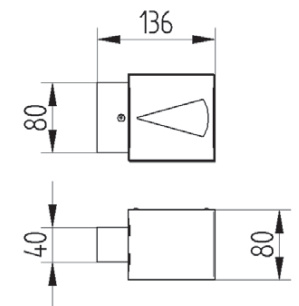
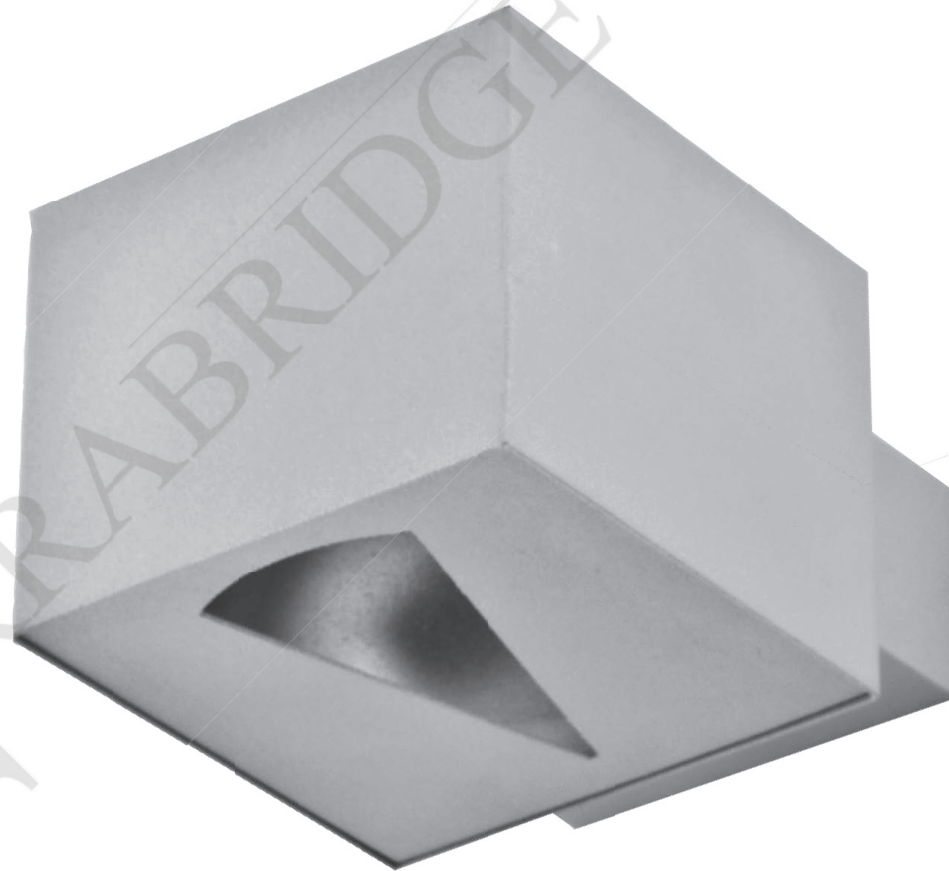


Wall mounted direct/indirect luminaire for halogen lamp. Body is made of steel and aluminium. All RAL colours are available.



- IP20
- 230 V
50 Hz
- F
- ⊥
- CE



| Index no. | Lamp | Weight | Socket |
|-----------------|--------|---------|--------|
| 0000-001846.1G9 | 1xQT14 | 0,80 kg | G9 |