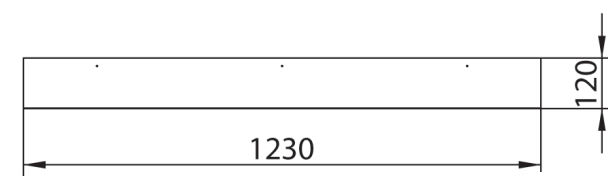
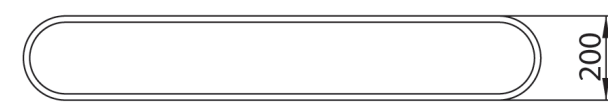
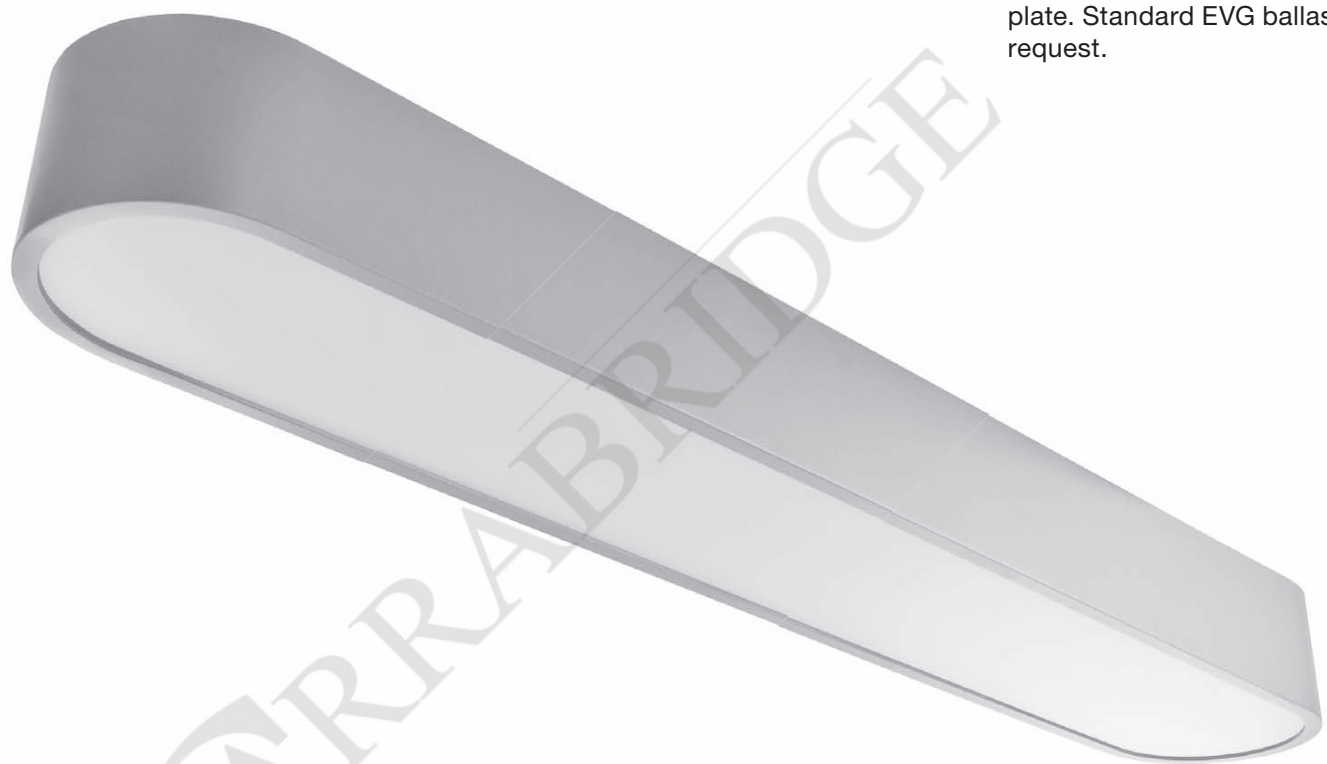


Pendent luminaire for T5 linear lamps. Body is made of steel and aluminum and is available in all RAL colours. Diffuser - opal acrylic plate. Standard EVG ballast, 1-10V dimmable or DALI ballast on request.



- IP20
- 230 V  
50 Hz
- F
- ⏚
- CE



Index no.	Lamp	Weight	Socket
0000-003702.254E	EVG, 2x54W T5	6,58 kg	G5
0000-003702.228	EVG, 2x28W T5	6,58 kg	G5