

Pendent luminaire for T5 linear and QR 111 lamps. Body is made of steel and aluminum and is available in all RAL colours. Double parabolic louver can be glossy or mat. Standard EVG ballast, 1-10V dimmable or DALI ballast on request.

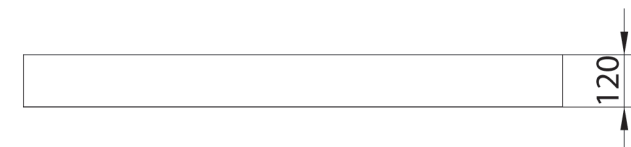
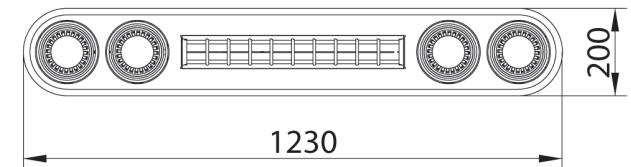


IP20

230 V  
50 Hz



CE



Index no.	Lamp	Weight	Socket
0000-0003794.114E+475E	EVG, 1x14W T5 + 4x75W QR111	7,00 kg	G5
0000-0003794.124E+475E	EVG, 1x24W T5 + 4x75W QR111	7,00 kg	G5