

Modular LED suspended luminaire.

- Mounting: suspended (suspension kit to be ordered separately); in-line (LC) mounting possible using internal junction fishplates + automatic connector
- Lighting source: embedded LED modules featuring LEDIZ®, an exclusive and patented technology by Diatal
- Electrical equipment: LED DRIVE® driver (dimming on request)
- Housing: extruded aluminum profile thickness 1,5 mm, white powder coated finish (other colors on request); customizable ABS end-caps (color inserts and commercial mark/brand inlay on request)
- Optical system: double-parabolic micro-optics OPTIMA® made of bright aluminum with high reflection coefficient (satin aluminum on request); version with opal polycarbonate (PC) diffuser colourLED®



IP20

IP40

IK07

220-240V
50/60Hz



650°

CE

RoHS

OPTIONS

DIM
1-10V

DIM
DALI



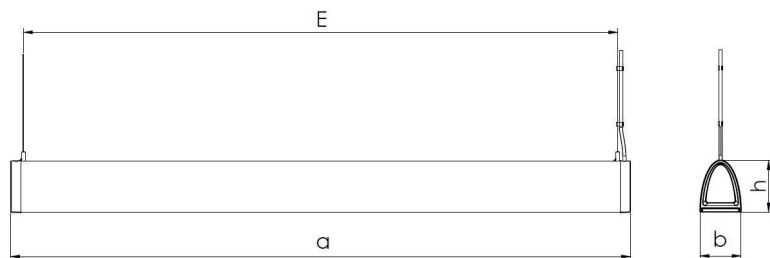
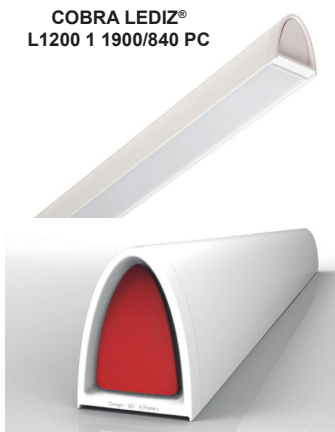
RAL 9006



COBRA LEDIZ®
L1200 1 2500/840 DPB-HR



COBRA LEDIZ®
L1200 1 1900/840 PC



	a	b	h	E
COBRA LEDIZ® L1200 1	1210	80	100	1160
COBRA LEDIZ® L1500 1	1510	80	100	1460

COBRA LEDIZ®
L1200 1 2500/840 DPB-HR

DESIGNATION	Nb sources	lm _{output}	W _{system}	lm/W	CCT	CRI	CRI _{R9}	Optic.	CL_UTE	UGR	Ta (min/max)
COBRA LEDIZ® L1200 1 2400/830 DPB-HR	1	2400 lm	30W	80 lm/W	3000 K	> 80	> 15	DPB-HR	B	< 19	+10°C / +40°C
COBRA LEDIZ® L1200 1 2500/840 DPB-HR	1	2500 lm	30W	84 lm/W	4000 K	> 80	> 25	DPB-HR	B	< 19	+10°C / +40°C
COBRA LEDIZ® L1200 1 3700/830 DPB-HR	1	3700 lm	48W	78 lm/W	3000 K	> 80	> 15	DPB-HR	B	< 19	+10°C / +40°C
COBRA LEDIZ® L1200 1 3900/840 DPB-HR	1	3900 lm	48W	82 lm/W	4000 K	> 80	> 25	DPB-HR	B	< 19	+10°C / +40°C
COBRA LEDIZ® L1500 1 2800/830 DPB-HR	1	2800 lm	36W	78 lm/W	3000 K	> 80	> 15	DPB-HR	B	< 19	+10°C / +40°C
COBRA LEDIZ® L1500 1 3000/840 DPB-HR	1	3000 lm	36W	84 lm/W	4000 K	> 80	> 25	DPB-HR	B	< 19	+10°C / +40°C
COBRA LEDIZ® L1500 1 3700/830 DPB-HR	1	3700 lm	49W	76 lm/W	3000 K	> 80	> 15	DPB-HR	B	< 19	+10°C / +40°C
COBRA LEDIZ® L1500 1 3900/840 DPB-HR	1	3900 lm	49W	80 lm/W	4000 K	> 80	> 25	DPB-HR	B	< 19	+10°C / +40°C
COBRA LEDIZ® L1500 1 5500/830 DPB-HR	1	5500 lm	75W	74 lm/W	3000 K	> 80	> 15	DPB-HR	B	< 19	+10°C / +40°C
COBRA LEDIZ® L1500 1 5900/840 DPB-HR	1	5900 lm	75W	79 lm/W	4000 K	> 80	> 25	DPB-HR	B	< 19	+10°C / +40°C
COBRA LEDIZ® L1200 1 1900/830 PC	1	1900 lm	30W	64 lm/W	3000 K	> 80	> 15	PC	D	-	+10°C / +40°C
COBRA LEDIZ® L1200 1 1900/840 PC	1	1900 lm	30W	64 lm/W	4000 K	> 80	> 25	PC	D	-	+10°C / +40°C
COBRA LEDIZ® L1200 1 3000/830 PC	1	3000 lm	48W	63 lm/W	3000 K	> 80	> 15	PC	D	-	+10°C / +40°C
COBRA LEDIZ® L1200 1 3100/840 PC	1	3100 lm	48W	65 lm/W	4000 K	> 80	> 25	PC	D	-	+10°C / +40°C
COBRA LEDIZ® L1500 1 2200/830 PC	1	2200 lm	36W	62 lm/W	3000 K	> 80	> 15	PC	D	-	+10°C / +40°C
COBRA LEDIZ® L1500 1 2300/840 PC	1	2300 lm	36W	64 lm/W	4000 K	> 80	> 25	PC	D	-	+10°C / +40°C
COBRA LEDIZ® L1500 1 3100/830 PC	1	3100 lm	49W	64 lm/W	3000 K	> 80	> 15	PC	D	-	+10°C / +40°C
COBRA LEDIZ® L1500 1 3200/840 PC	1	3200 lm	49W	66 lm/W	4000 K	> 80	> 25	PC	D	-	+10°C / +40°C
COBRA LEDIZ® L1500 1 4500/830 PC	1	4500 lm	75W	60 lm/W	3000 K	> 80	> 15	PC	D	-	+10°C / +40°C
COBRA LEDIZ® L1500 1 4700/840 PC	1	4700 lm	75W	63 lm/W	4000 K	> 80	> 25	PC	D	-	+10°C / +40°C