

# QUADRO-P LEDIZ®

SURFACE MOUNTED OR SUSPENDED LUMINAIRES



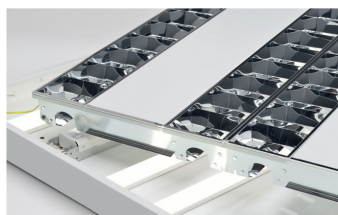
Multipurpose LED surface mounted.

- Mounting: surface mounted
- Lighting source: embedded LED modules featuring LEDIZ®, an exclusive and patented technology by Diatal
- Electrical equipment: LED DRIVE® driver (dimming on request)
- Housing: steel sheet, white powder coated finish
- Optical system: double-parabolic louvre made of bright aluminum (satin aluminum on request)

**QUADRO-P LEDIZ®  
M600X600 4 4100/840 DPB SDS**



**QUADRO-P LEDIZ®  
M600X600 3 3000/840 DPB**



**QUADRO-P LEDIZ®  
M1200X300 2 4700/840 DPB**



IP20

IK07

220-240V  
50/60Hz



650°

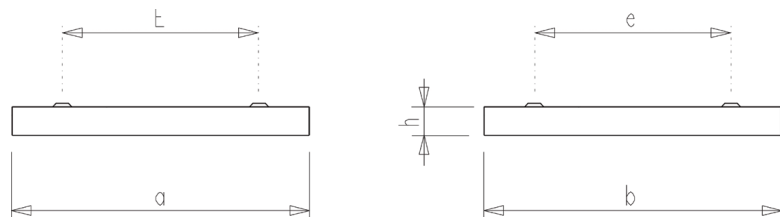


M600

**OPTIONS**

DIM  
1-10V

DIM  
DALI



	a	b	h	E	e
QUADRO-P LEDIZ® M600x600	604	604	58	400	400
QUADRO-P LEDIZ® M1200x300	1196	296	58	850	

**QUADRO-P LEDIZ®  
M600X600 4 4100/840 DPB SDS**

DESIGNATION	Nb sources	lm output	W <sub>system</sub>	lm/W	CCT	CRI	CRI <sub>R9</sub>	Optic.	Cl. UTE	UGR	Ta (min/max)
QUADRO-P LEDIZ® M600x600 3 2800/830 DPB	3	2800 lm	36W	78 lm/W	3000 K	> 80	> 15	DPB	B	< 19	+10°C / +40°C
QUADRO-P LEDIZ® M600x600 3 3000/840 DPB	3	3000 lm	36W	84 lm/W	4000 K	> 80	> 25	DPB	B	< 19	+10°C / +40°C
QUADRO-P LEDIZ® M600x600 4 4000/830 DPB S	4	4000 lm	47W	86 lm/W	3000 K	> 80	> 15	DPB S	B	< 19	+10°C / +40°C
QUADRO-P LEDIZ® M600x600 4 4100/840 DPB S	4	4100 lm	47W	88 lm/W	4000 K	> 80	> 25	DPB S	B	< 19	+10°C / +40°C
QUADRO-P LEDIZ® M600x600 4 4000/830 DPB SDS	4	4000 lm	47W	86 lm/W	3000 K	> 80	> 15	DPB SDS	B	< 19	+10°C / +40°C
QUADRO-P LEDIZ® M600x600 4 4100/840 DPB SDS	4	4100 lm	47W	88 lm/W	4000 K	> 80	> 25	DPB SDS	B	< 19	+10°C / +40°C
QUADRO-P LEDIZ® M1200x300 2 4500/830 DPB	2	4500 lm	53W	85 lm/W	3000 K	> 80	> 15	DPB	B	< 19	+10°C / +40°C
QUADRO-P LEDIZ® M1200x300 2 4700/840 DPB	2	4700 lm	53W	89 lm/W	4000 K	> 80	> 25	DPB	B	< 19	+10°C / +40°C
QUADRO-P LEDIZ® M600x600 3 2900/830 DPB-HR	3	2900 lm	36W	81 lm/W	3000 K	> 80	> 15	DPB-HR	B	< 19	+10°C / +40°C
QUADRO-P LEDIZ® M600x600 3 3100/840 DPB-HR	3	3100 lm	36W	87 lm/W	4000 K	> 80	> 25	DPB-HR	B	< 19	+10°C / +40°C
QUADRO-P LEDIZ® M600x600 4 4100/830 DPB-HR S	4	4100 lm	47W	88 lm/W	3000 K	> 80	> 15	DPB-HR S	B	< 19	+10°C / +40°C
QUADRO-P LEDIZ® M600x600 4 4200/840 DPB-HR S	4	4200 lm	47W	90 lm/W	4000 K	> 80	> 25	DPB-HR S	B	< 19	+10°C / +40°C
QUADRO-P LEDIZ® M600x600 4 4100/830 DPB-HR SDS	4	4100 lm	47W	88 lm/W	3000 K	> 80	> 15	DPB-HR SDS	B	< 19	+10°C / +40°C
QUADRO-P LEDIZ® M600x600 4 4200/840 DPB-HR SDS	4	4200 lm	47W	90 lm/W	4000 K	> 80	> 25	DPB-HR SDS	B	< 19	+10°C / +40°C
QUADRO-P LEDIZ® M1200x300 2 4600/830 DPB-HR	2	4600 lm	53W	87 lm/W	3000 K	> 80	> 15	DPB-HR	B	< 19	+10°C / +40°C
QUADRO-P LEDIZ® M1200x300 2 4800/840 DPB-HR	2	4800 lm	53W	91 lm/W	4000 K	> 80	> 25	DPB-HR	B	< 19	+10°C / +40°C