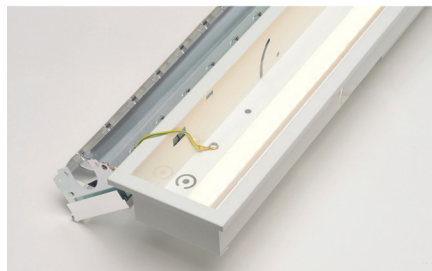


REFH LEDIZ®
L1200 1 2100/840 DPB



IP20

IK07

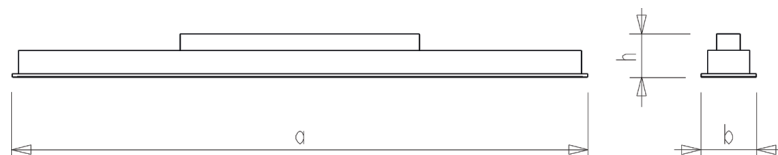
220-240V
50/60Hz



650°



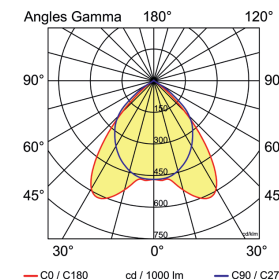
OPTIONS



	a	b	h
REFH LEDIZ® L1200	1196	115	90
REFH LEDIZ® L1500	1496	115	90

LED mono recessed.

- Mounting: lay-in (LI) recessed in modular false ceilings, or lay-out (LO) into plasterboard ceilings or ceilings with concealed profiles using brackets (to be ordered separately)
- Lighting source: embedded LED modules featuring LEDIZ®, an exclusive and patented technology by Diatal
- Electrical equipment: LED DRIVE® driver (dimming on request)
- Housing: steel sheet, white powder coated finish
- Optical system: double-parabolic louvre made of bright aluminum (satin aluminum on request)



REFH LEDIZ®
L1200 1 2100/840 DPB

DESIGNATION	Nb sources	Im _{output}	W _{system}	Im/W	CCT	CRI	CRI _{R9}	Optic.	CL UTE	Ta (min/max)
REFH LEDIZ® L1200 1 2000/830 DPB	1	2000 lm	23W	87 lm/W	3000 K	> 80	> 15	DPB	B	+10°C / +40°C
REFH LEDIZ® L1200 1 2100/840 DPB	1	2100 lm	23W	92 lm/W	4000 K	> 80	> 25	DPB	B	+10°C / +40°C
REFH LEDIZ® L1200 1 3100/830 DPB	1	3100 lm	38W	82 lm/W	3000 K	> 80	> 15	DPB	B	+10°C / +40°C
REFH LEDIZ® L1200 1 3300/840 DPB	1	3300 lm	38W	87 lm/W	4000 K	> 80	> 25	DPB	B	+10°C / +40°C
REFH LEDIZ® L1500 1 2500/830 DPB	1	2500 lm	29W	87 lm/W	3000 K	> 80	> 15	DPB	B	+10°C / +40°C
REFH LEDIZ® L1500 1 2700/840 DPB	1	2700 lm	29W	94 lm/W	4000 K	> 80	> 25	DPB	B	+10°C / +40°C
REFH LEDIZ® L1500 1 3300/830 DPB	1	3300 lm	38W	87 lm/W	3000 K	> 80	> 15	DPB	B	+10°C / +40°C
REFH LEDIZ® L1500 1 3500/840 DPB	1	3500 lm	38W	93 lm/W	4000 K	> 80	> 25	DPB	B	+10°C / +40°C