

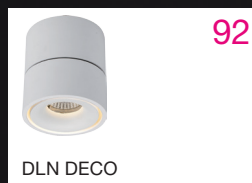
92

DLN 90 LED



100

PLAFO 900 LED



92

DLN DECO



102

HALCON



94

DLN 170 FORTIMO TWIST



102

INTEG SPOT



94

DLN 170 FORTIMO LED DLM



103

DECO LED



96

DLN 185 ECO LED



96

PLAFO 195 LED



98

PLAFO 300 LED



98

PLAFO 430 LED



100

PLAFO 650 LED

INDOOR 03

LED

SURFACE
MOUNTED
CIRCULAR

DLN 90 LED



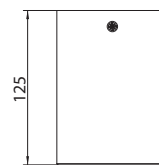
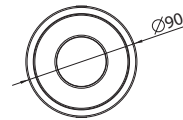
Surface mounted Fortimo LED Disc luminaire. Body is made of aluminium. All RAL colours are available.

Product features:

- Leading edge dimming
- Superior light quality and performance
- Innovative and reliable LED solution
- Integrated driver
- Built-in beam angle (85°)

Ideal for replacing halogen 50 W, CFL 2x13W or incandescent 60W solutions in various applications:

- Hospitality, healthcare and cruise ship applications: corridors, service areas, lobbies, lounges, restaurants, reception areas
- Home applications: ceiling luminaires
- Retail applications: corridors, changing rooms
- Office applications: corridors, meeting rooms



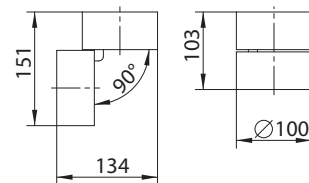
Index no.	Lumen output	Wattage	Colour temp.	Colour rendering index	Lifetime	Weight
0000-004394.800/827	800 lm	12 W	2700 K	80 Ra	50,000 h	0,60 kg
0000-004394.800/830	800 lm	12 W	3000 K	80 Ra	50,000 h	0,60 kg
0000-004394.850/840	850 lm	11 W	4000 K	80 Ra	50,000 h	0,60 kg

IP20

230 V
50 Hz



DLN DECO



Surface mounted adjustable LED luminaire. Body is made of aluminium. All RAL colours are available.

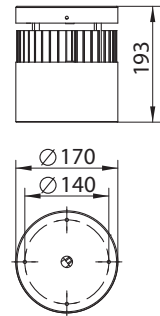
Index no.	Lumen output	Wattage	Colour temp.	Colour rendering index	Lifetime	Weight
0000-004574.860/830	860 lm	10 W	3000 K	80 Ra	30,000 h	1,10 kg

IP20

230 V
50 Hz



DLN 170 FORTIMO TWIST



Surface mounted LED luminaire. Body is made of steel and aluminum and is available in all RAL colours. Superior-quality white LED light, integrated driver. Dimmable via leading edge dimming. Light source - Philips Fortimo Twist. Optional IP44 clear or mat glass.

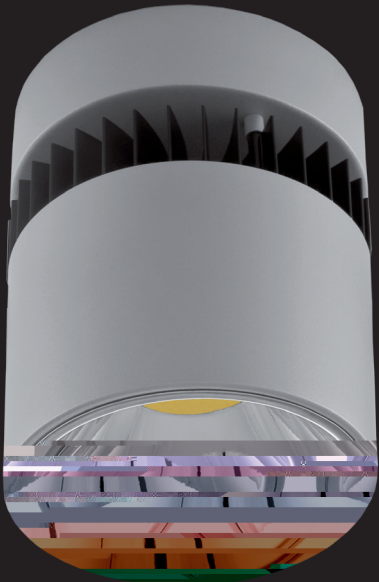
- Applications:
- Replacement for halogen or CFL downlights
 - Hospitality, healthcare and cruise ship applications: corridors, service areas, lobbies, lounges, restaurants, reception areas
 - Home applications: ceiling luminaires
 - Retail applications: corridors, changing rooms
 - Office applications: corridors, meeting rooms, reception areas

Index no.	Lumen output	Wattage	Colour temp.	Colour rendering index	Lifetime	Weight
0000-003783.1100/830	1100 lm	16 W	3000 K	80 Ra	50,000 h	2,24 kg
0000-003783.1100/840	1100 lm	15 W	4000 K	80 Ra	50,000 h	2,24 kg

IP20

230 V
50 Hz

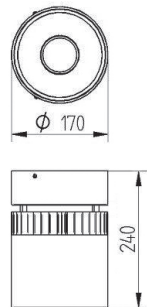
DLN 170 FORTIMO LED DLM



Surface mounted LED luminaire. Body is made of steel and aluminium and it is available in all RAL colours. Light source - Philips Fortimo LED DLM module. Standard EVG ballast, Touch DALI version on request (please add TD after index number). Optional IP44 clear or mat glass. This luminaire is also available in suspended version - please add PND after index number.

High quality, energy efficient white LED light with CRI 80.

- Perfect replacement for CFL downlights in:
- Offices
 - Public buildings
 - Hotel lobbies and receptions
 - Retail



Index no.	Lumen output	Wattage	Colour temp.	Colour rendering index	Lifetime	Weight
0000-003320.1100/830	1100 lm	14 W	3000 K	80 Ra	50,000 h	2,41 kg
0000-003320.1100/840	1100 lm	12 W	4000 K	80 Ra	50,000 h	2,41 kg
0000-003320.2000/830	2000 lm	24 W	3000 K	80 Ra	50,000 h	2,41 kg
0000-003320.2000/840	2000 lm	22 W	4000 K	80 Ra	50,000 h	2,41 kg
0000-003320.3000/830	3000 lm	37 W	3000 K	80 Ra	50,000 h	2,41 kg
0000-003320.3000/840	3000 lm	34 W	4000 K	80 Ra	50,000 h	2,41 kg

IP20	230 V 50 Hz					
------	----------------	--	--	--	--	--

GARRABRIDGE reserves rights to introduce any construction or technical changes in the products. Wattage of products may vary due to constant LED efficacy improvements.



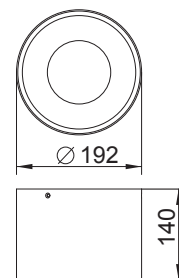
DLN 185 ECO LED



PLAFO 185 LED



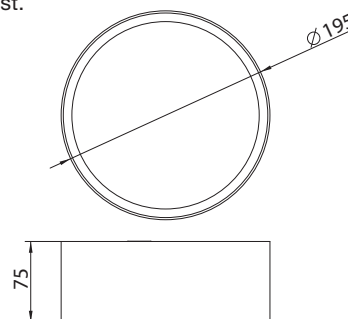
Surface mounted LED downlight. Body is made of steel and aluminium and can be painted in any RAL colour. Silver glossy reflector in standard, white painted on request. Optional IP44 version.



Index no.	Lumen output	Wattage	Colour temp.	Colour rendering index	Lifetime	Weight
0000-004446.2000/830	2000 lm	26 W	3000 K	80 Ra	30,000 h	0,90 kg
0000-004446.2000/840	2000 lm	26 W	4000 K	80 Ra	30,000 h	0,90 kg

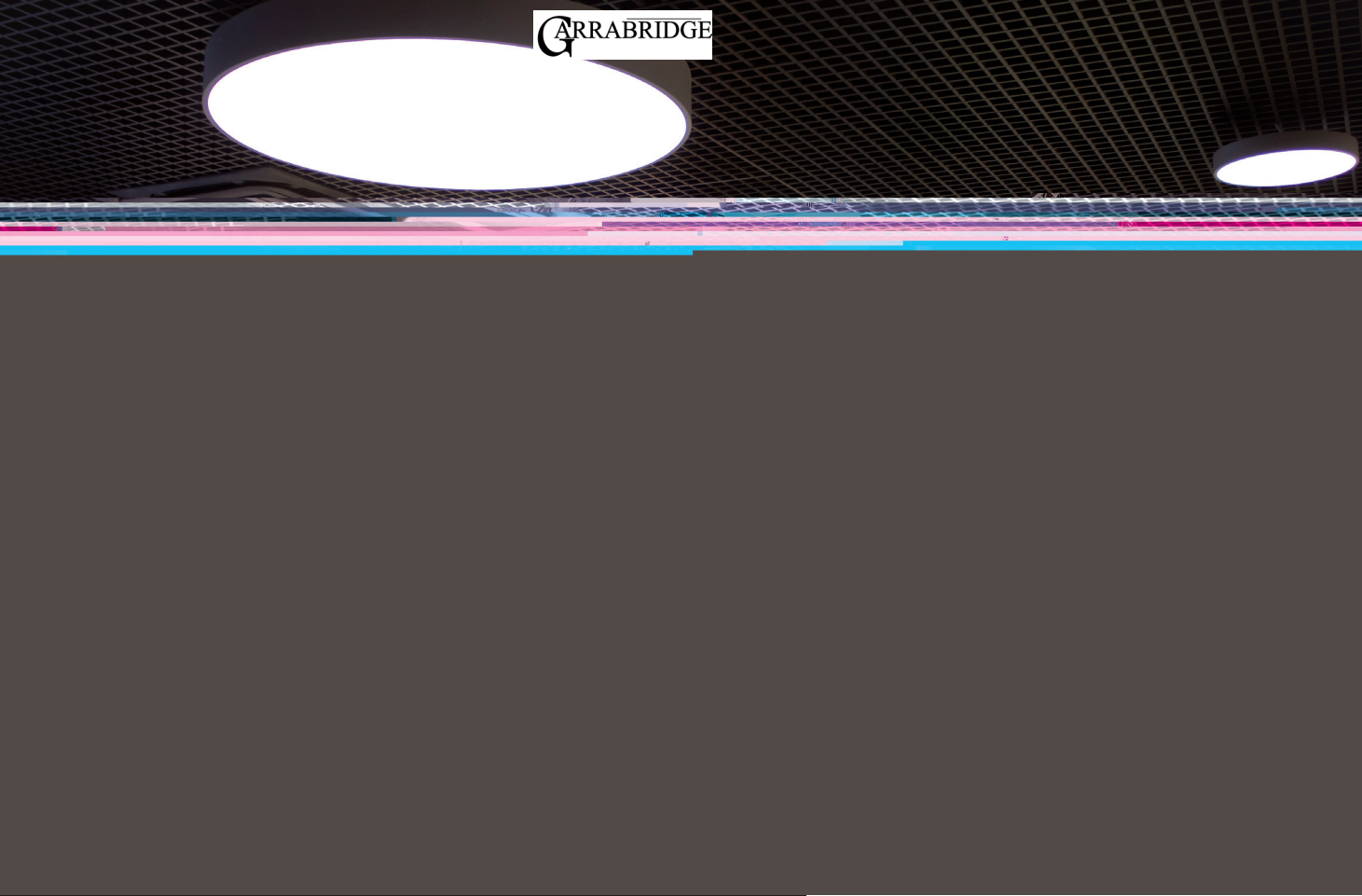


Surface mounted LED luminaire. Body is made of steel and aluminium and it is available in all RAL colours. Suspended version on request.



Index no.	Lumen output	Wattage	Colour temp.	Colour rendering index	Lifetime	Weight
0000-004416.1300/830	1300 lm	12 W	3000 K	80 Ra	50,000 h	2,10 kg
0000-004416.1300/840	1300 lm	11 W	4000 K	80 Ra	50,000 h	2,10 kg





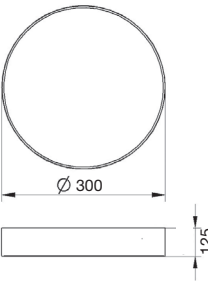
Surface mounted LED luminaire with opal diffuser. Light source - custom made LED plate - OSRAM Technology included. Standard EVG ballast, DALI version on request. Body is made of steel and aluminium and is available in all RAL colours.

High quality, energy efficient white LED light with CRI 80.

Perfect replacement for conventional T5 luminaires in:

- Offices
- Public buildings
- Hotel lobbies and receptions
- Retail

Index no.	Lumen output	Wattage	Colour temp.	Lifetime	Weight
0000-003512.1400/840	1400 lm	16 W	4000 K	50,000 h	3,00 kg
0000-003512.2000/840	2000 lm	23 W	4000 K	50,000 h	3,00 kg
0000-003512.2600/840	2600 lm	33 W	4000 K	50,000 h	3,00 kg
0000-003512.1350/830	1350 lm	16 W	3000 K	50,000 h	3,00 kg
0000-003512.1900/830	1900 lm	23 W	3000 K	50,000 h	3,00 kg
0000-003512.2500/830	2500 lm	33 W	3000 K	50,000 h	3,00 kg



PLAF0 300 LED



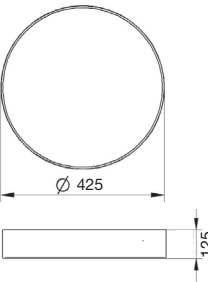
Surface mounted LED luminaire with opal diffuser. Light source - Fortimo LED Line or PrevalLED Linear. Standard EVG ballast, Touch DALI version on request. Body is made of steel and aluminium and is available in all RAL colours.

High quality, energy efficient white LED light with CRI 80.

Perfect replacement for conventional T5 luminaires in:

- Offices
- Public buildings
- Hotel lobbies and receptions
- Retail

Index no.	Lumen output	Wattage	Colour temp.	Colour rendering index	Lifetime	Weight
0000-003513.LL2600/830	2600 lm	19 W	3000 K	80 Ra	50,000 h	3,70 kg
0000-003513.LL2600/840	2600 lm	19 W	4000 K	80 Ra	50,000 h	3,70 kg



PLAF0 430 LED



PLAF0 650 LED



PLAF0 900 LED

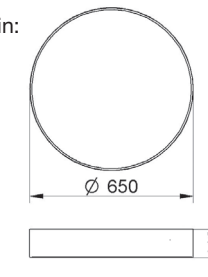


Surface mounted LED luminaire with opal diffuser. Light source - Fortimo LED Line or PrevaLED Linear. Standard EVG ballast, Touch DALI version on request. Body is made of steel and aluminium and is available in all RAL colours.

High quality, energy efficient white LED light with CRI 80.

Perfect replacement for conventional T5 luminaires in:

- Offices
- Public buildings
- Hotel lobbies and receptions
- Retail



Index no.	Lumen output	Wattage	Colour temp.	Colour rendering index	Lifetime	Weight
0000-003514.LL5200/830	5200 lm	37 W	3000 K	80 Ra	50,000 h	6,90 kg
0000-003514.LL5200/840	5200 lm	37 W	4000 K	80 Ra	50,000 h	6,90 kg

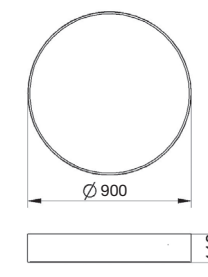


Surface mounted LED luminaire with opal diffuser. Light source - Fortimo LED Line, PrevaLED Linear or Tridonic Stark LED module. Standard EVG ballast, Touch DALI version on request. Body is made of steel and aluminium and is available in all RAL colours.

High quality, energy efficient white LED light with CRI 80.

Perfect replacement for conventional T5 luminaires in:

- Offices
- Public buildings
- Hotel lobbies and receptions
- Retail



Index no.	Lumen output	Wattage	Colour temp.	Colour rendering index	Lifetime	Weight
0000-003515.ST10000/830	10000 lm	80 W	3000 K	80 Ra	50,000 h	10,50 kg
0000-003515.ST10000/840	10000 lm	80 W	4000 K	80 Ra	50,000 h	10,50 kg



GARRABRIDGE reserves rights to introduce any construction or technical changes in the products. Wattage of products may vary due to constant LED efficacy improvements.

